

Caribou

Habitat Connectivity

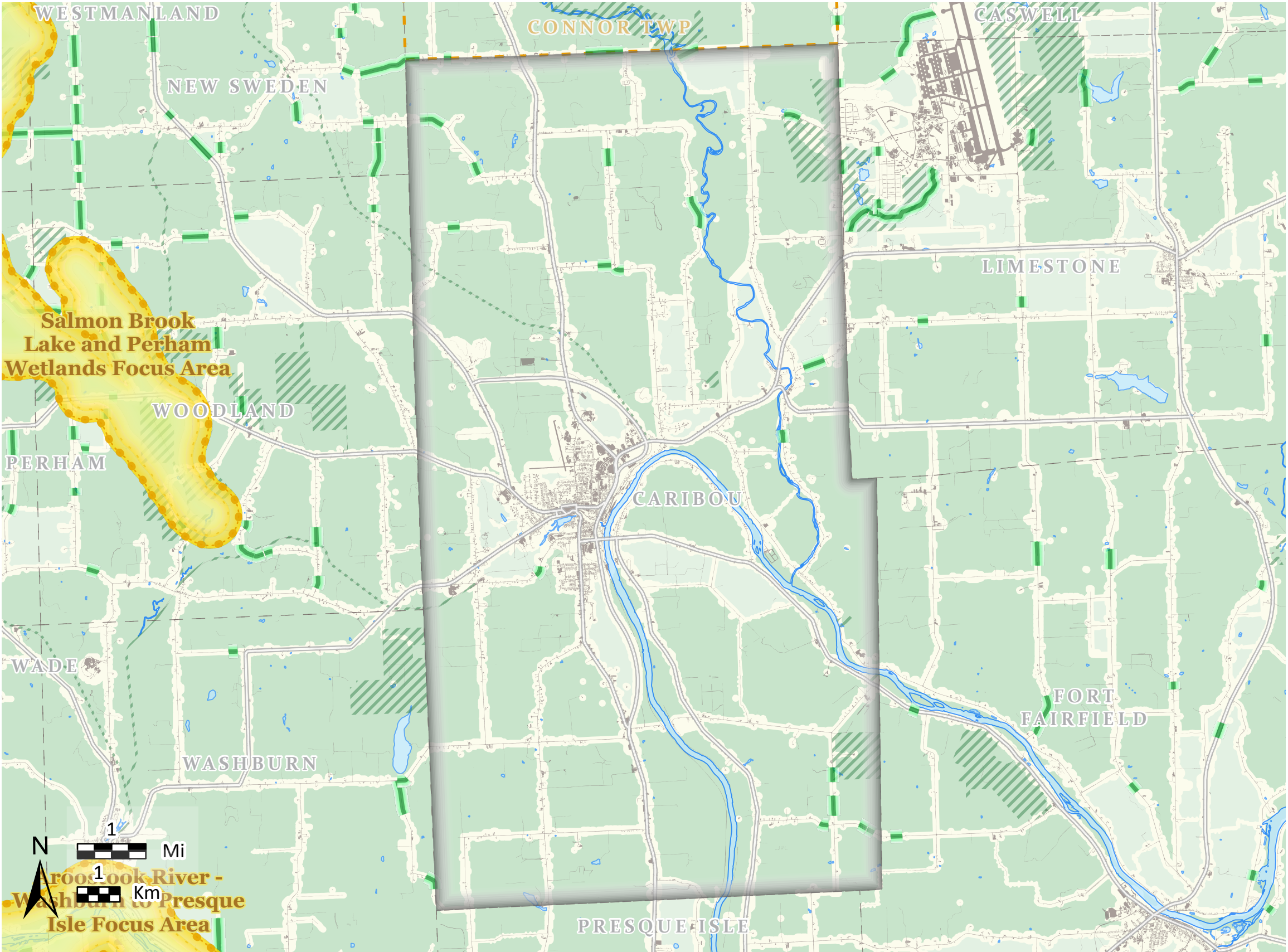


Beginning with Habitat (BwH)
equips Maine communities, landowners, and conservation partners with tools to protect, restore, and connect important habitats and ecosystems in a changing climate.
www.beginningwithhabitat.org

- Organized Towns**
- Unorganized Towns**
- Area of Interest**
- Impervious Surface**
- Focus Areas of Statewide Ecological Significance**
- Conserved Lands**
 - Fee and Easement Conservation Land**
- Habitat Blocks**

Comprehensive Plan Review Criteria Rule (DACF Chapter 208) requires blocks >500 acres be considered important natural resources for town comprehensive planning.

 - 0-500 Acres**
 - 500 + Acres**
- Development Buffer**
- Habitat Connectors**
 - Likely Road Crossing Areas for Wildlife**



This map is nonregulatory and is intended for planning purposes only

March 2025

TOWNSHIP BOUNDARIES - ME Office of GIS (2021)
IMPERVIOUS CCAP NOAA - impervious land cover (2022)
HYDROLOGY - US Geological Survey (2016)
UNDEVELOPED HABITAT BLOCKS & CONNECTORS - ME Dep of Inland Fisheries and Wildlife (2020)
ROAD STREAM CROSSINGS - ME Dep. of Inland Fisheries and Wildlife (2022)

CONSERVATION LANDS - ME Dept of Ag., Cons., and For., Land Use Planning Comm'n, ME Dep. of Inland Fisheries and Wildlife (2024)